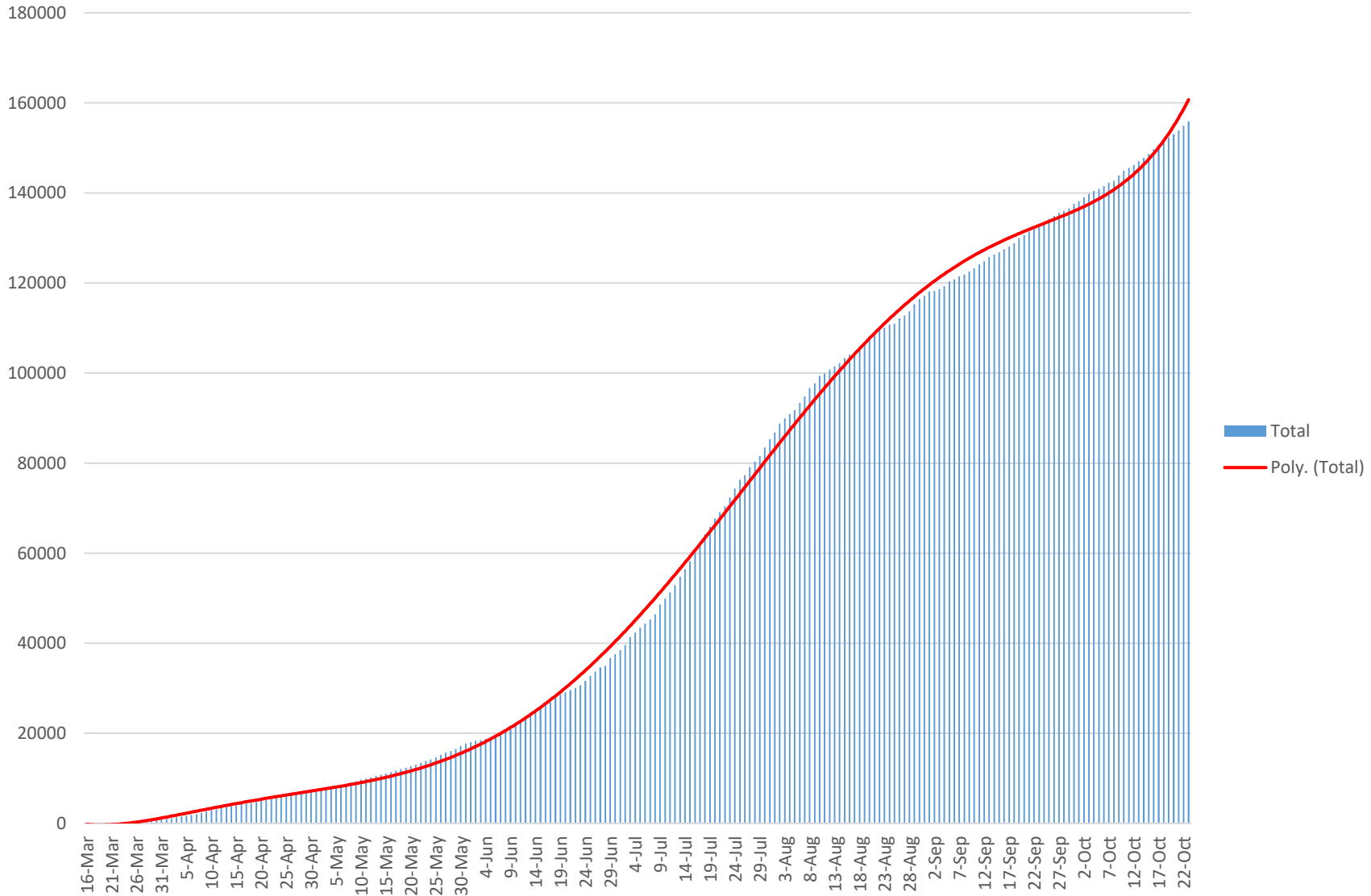
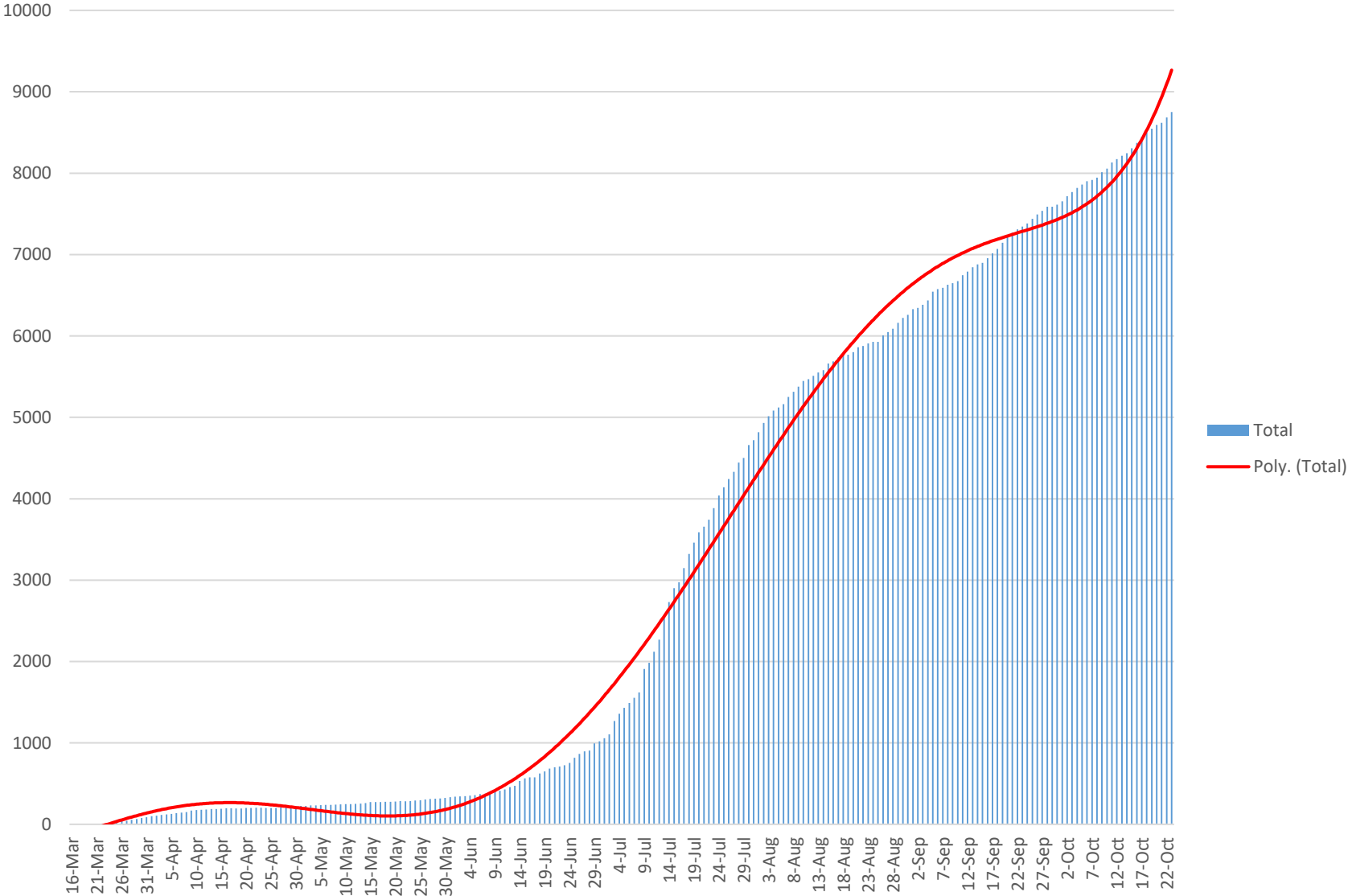


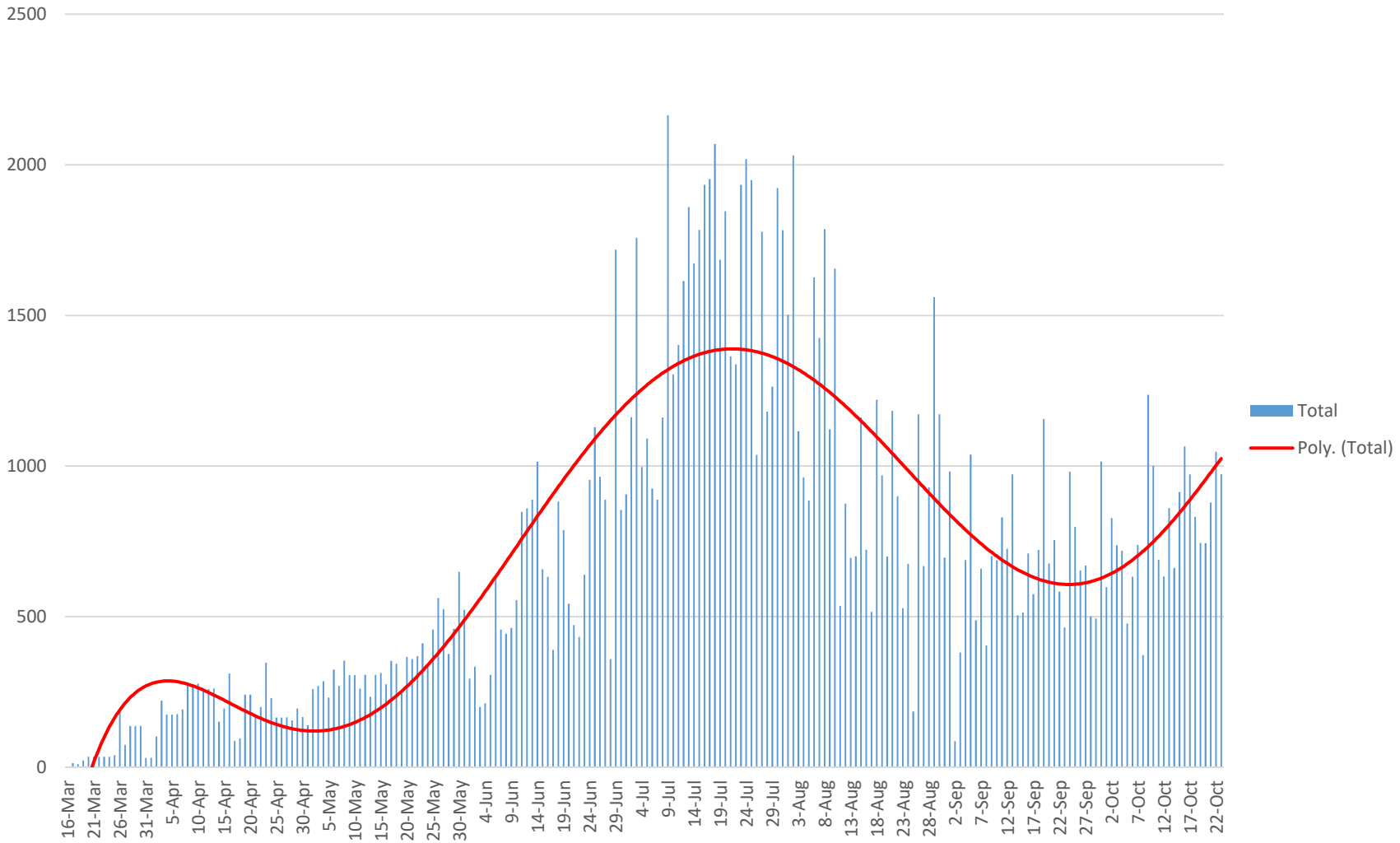
# Cumulative State Cases



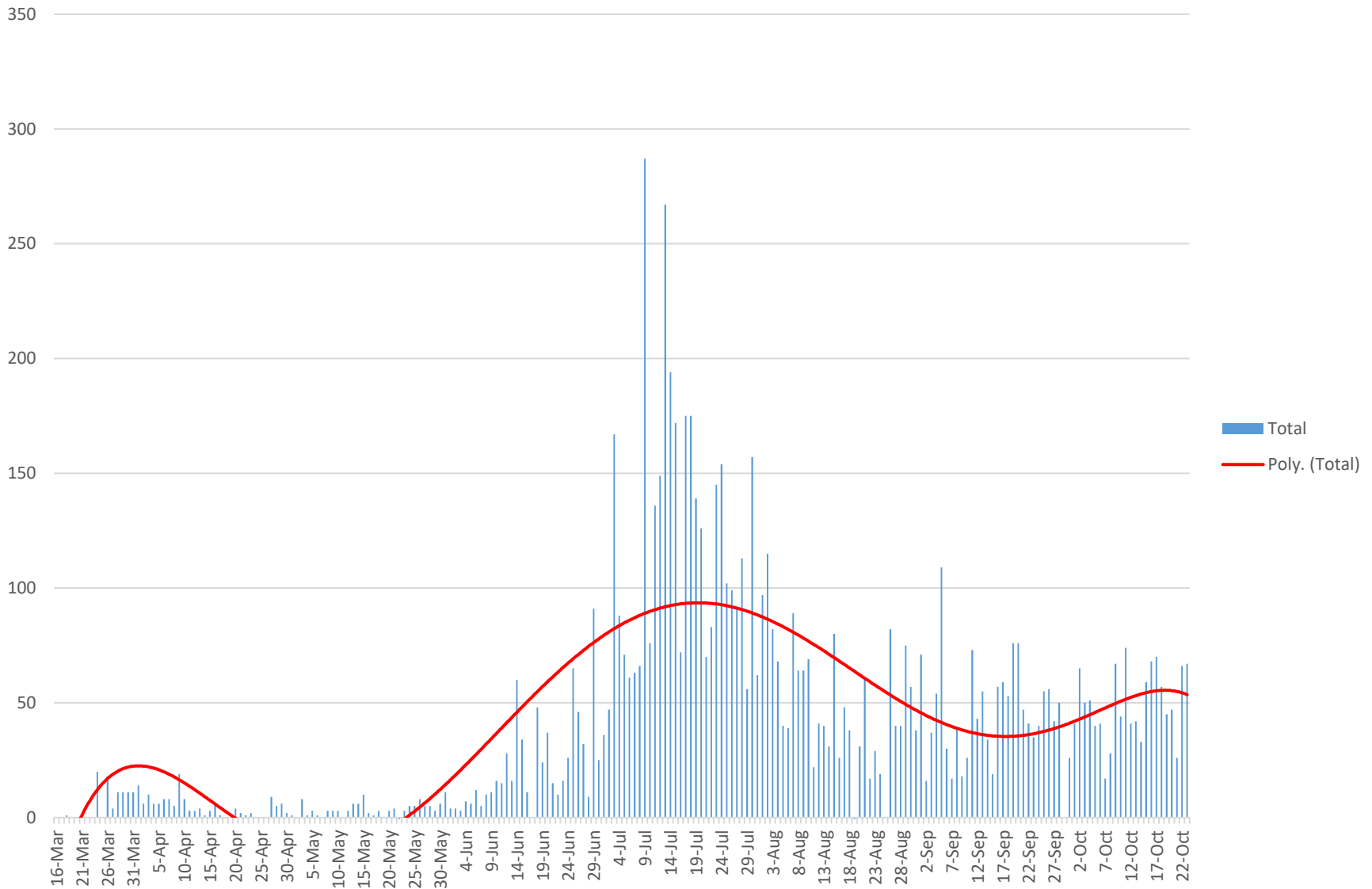
# Cumulative Madison County Cases



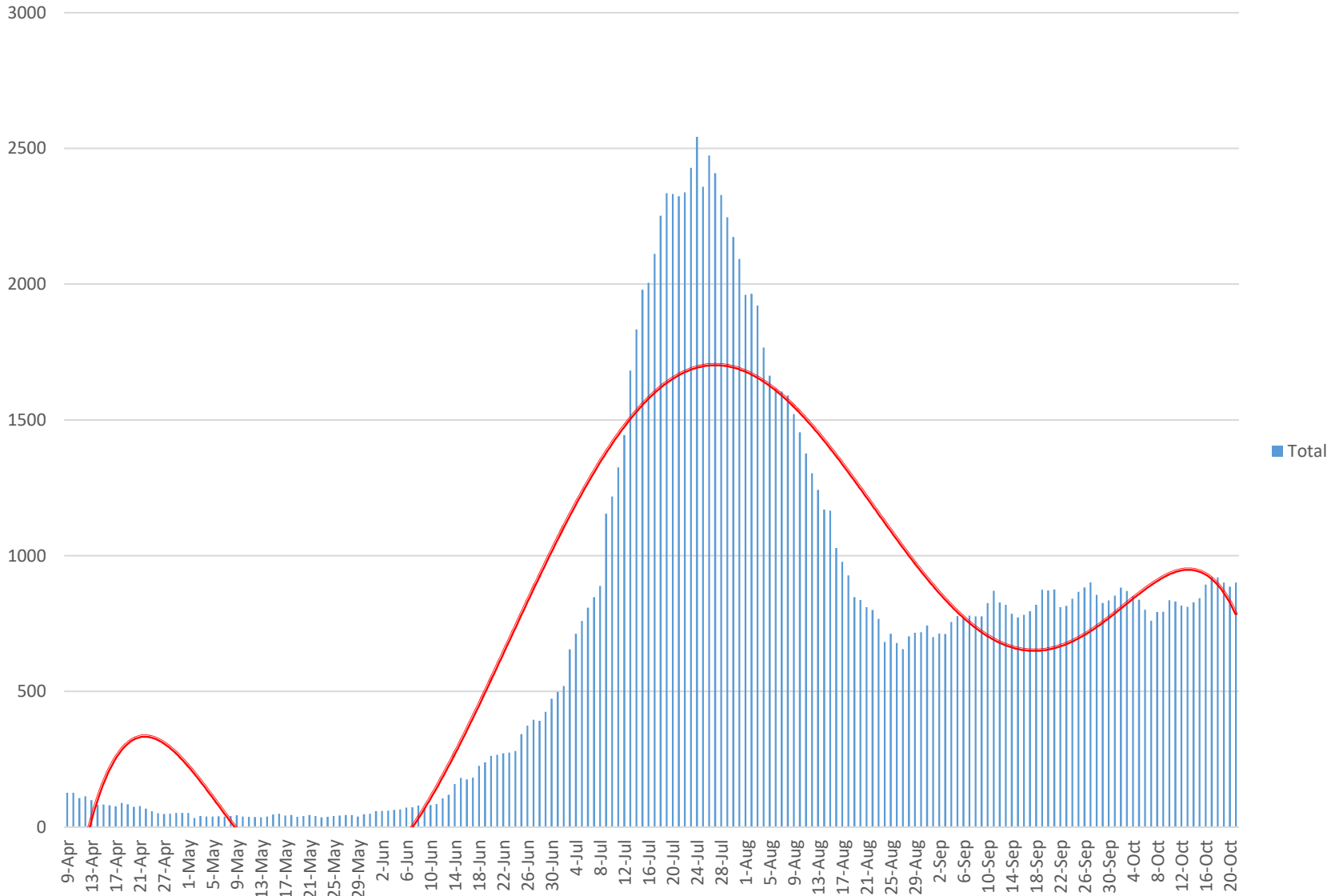
# Daily State Increases



# Daily Madison County Increases



# Cases in Quarantine



Date	10/19/2020	10/20/2020	10/21/2020	10/22/2020	10/23/2020
Current State Cumulative Cases	152272	153016	153895	154942	155915
Increase/Decrease in State Cases	745	744	879	1047	973
Current Mad. County Cumulative Cases	8545	8592	8618	8684	8751
Increase/Decrease in County Cases	45	47	26	66	67
Current Quarantine Cases	901	886	901		
Increase/Decrease in Quarantine Cases	-19	-15	15		
Cumulative Deaths in Madison County	85	86	87	87	87
COVID patients in HSV Hospital System	122	133	139		141
COVID patients in HSV Hospital	58	60	60		52
COVID patients in HSV ICU	12	11	11		15
COVID patients on ventilators at HSV Hospital	8	5	6		5
COVID patients in Crestwood Hospital System			11		
COVID patients in Crestwood ICU			5		
COVID patients on ventilators at Crestwood Hospital			3		