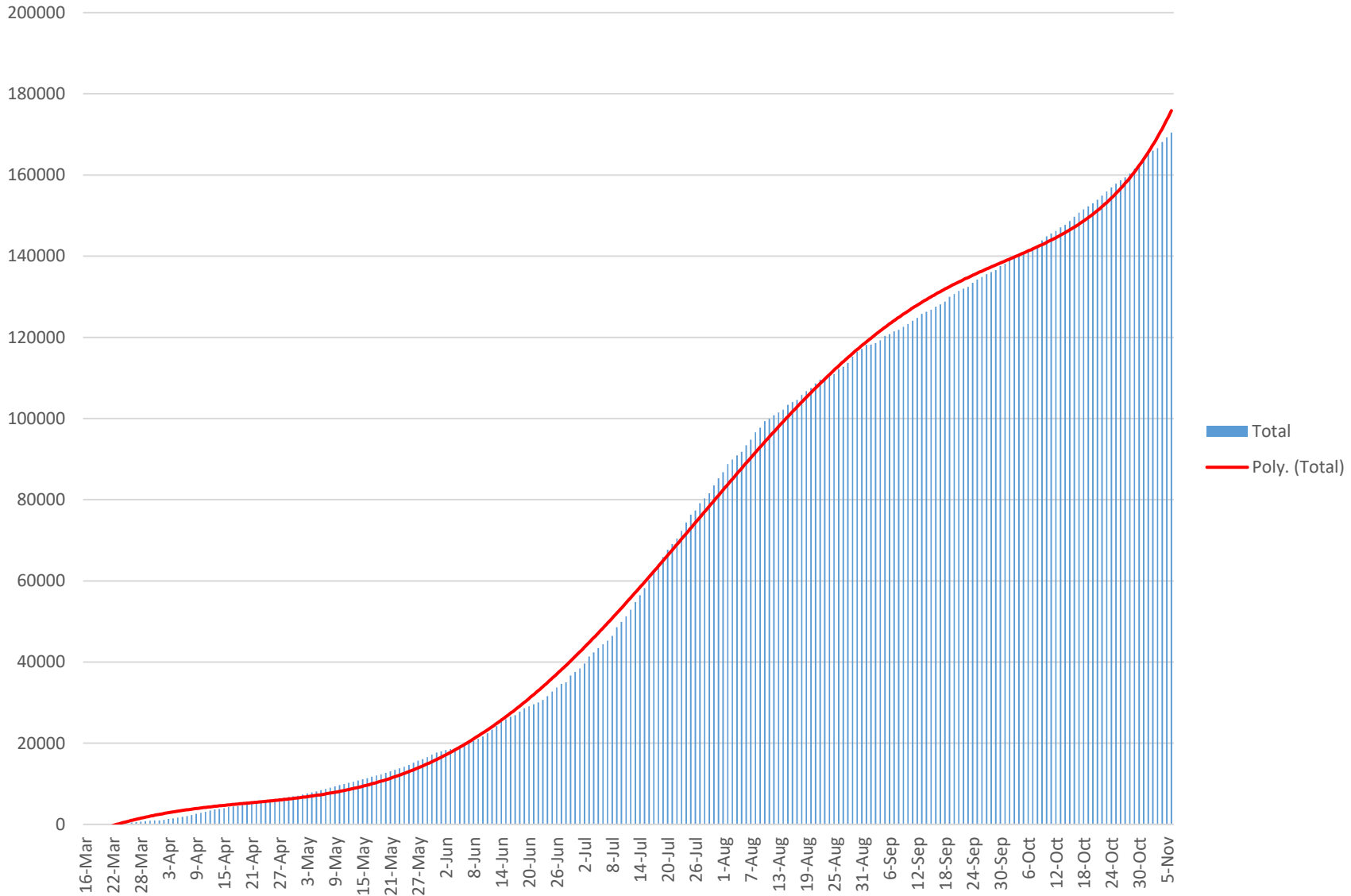
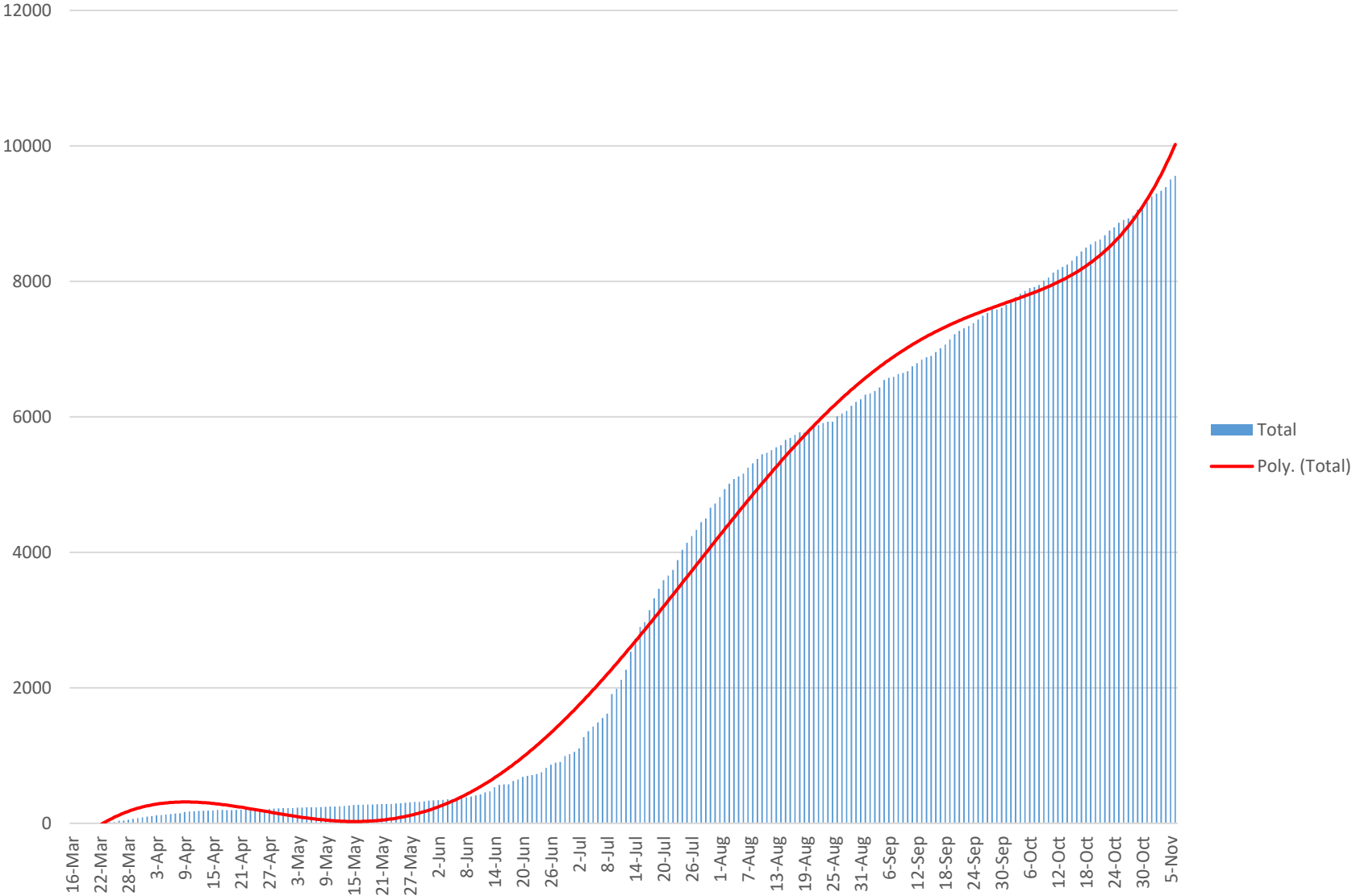


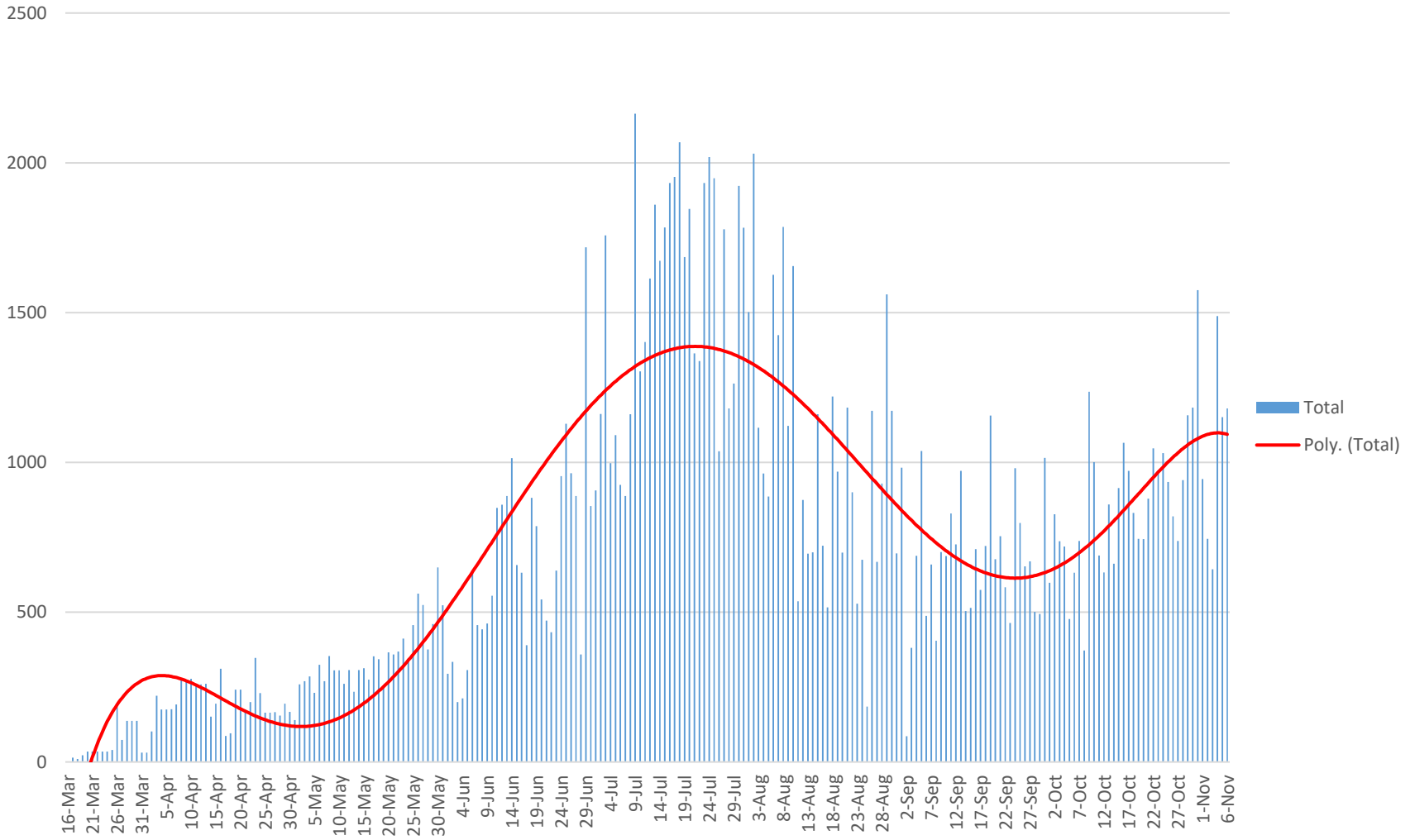
Cumulative State Cases



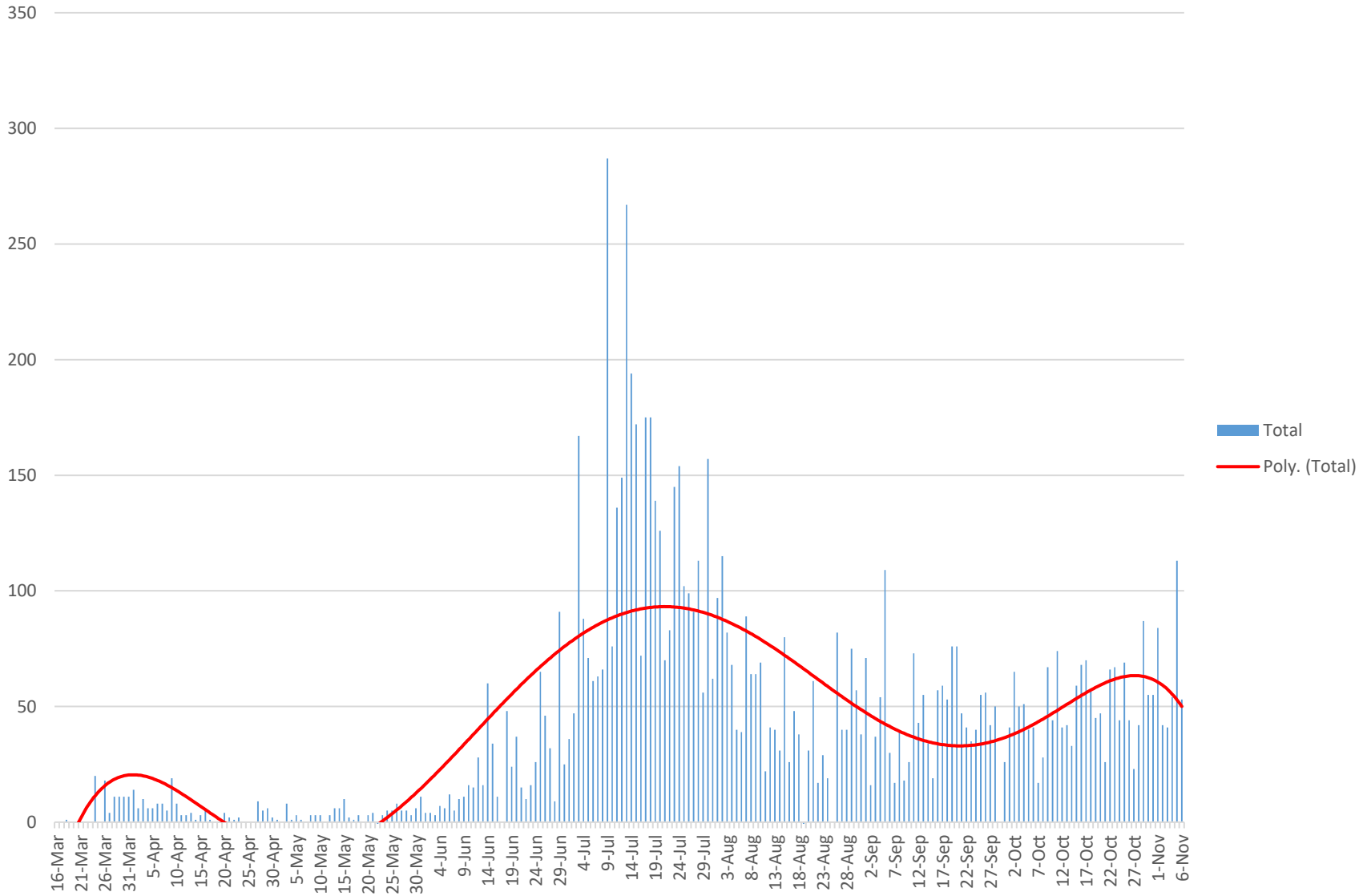
Cumulative Madison County Cases



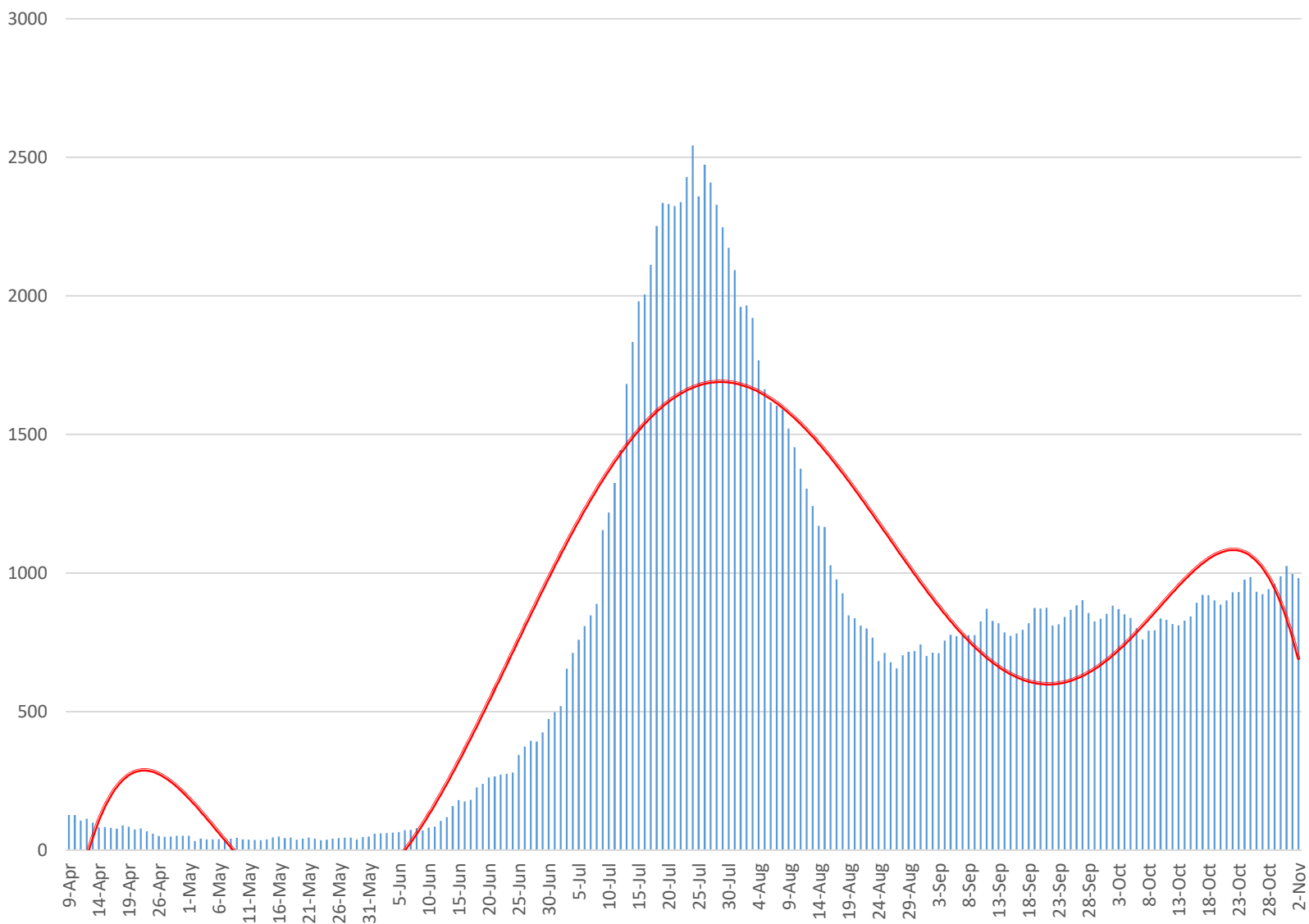
Daily State Increases



Daily Madison County Increases



Cases in Quarantine



■ Total

Date	11/2/2020	11/3/2020	11/4/2020	11/5/2020	11/6/2020
Current State Cumulative Cases	165984	166627	168115	169266	170446
Increase/Decrease in State Cases	745	643	1488	1151	1180
Current Mad. County Cumulative Cases	9296	9337	9391	9504	9557
Increase/Decrease in County Cases	42	41	54	113	53
Current Quarantine Cases	982				
Increase/Decrease in Quarantine Cases	-15				
Cumulative Deaths in Madison County	92	93	94	94	98
COVID patients in HSV Hospital System	164	164	161	150	
COVID patients in HSV Hospital	76	78	78	74	
COVID patients in HSV ICU	15	15	16	15	
COVID patients on ventilators at HSV Hospital	8	8	8	7	
COVID patients in Crestwood Hospital System			10		
COVID patients in Crestwood ICU			7		
COVID patients on ventilators at Crestwood Hospital			5		